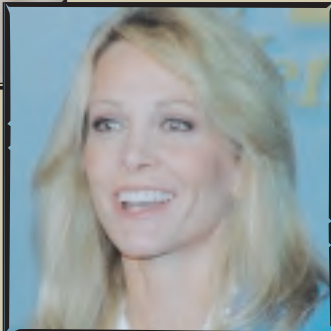




Clare Boothe Luce
POLICY INSTITUTE

Great American Conservative Women



2005 CALENDAR



“

‘Courage,’ Clare Boothe Luce said, ‘is the ladder on which all other virtues mount.’ It took great courage to establish a policy institute in her name, dedicated to women’s strengths that counter the politically correct, radical feminist voices that dominate our culture. The success of the Clare Boothe Luce Policy Institute can be measured by the rungs it has added to that ladder on behalf of mainstream attitudes towards women.

— Suzanne Fields,
Luce speaker and
nationally syndicated columnist

”

The Clare Boothe Luce Policy Institute reaches out to young women all over the nation to prepare them for effective conservative leadership. The Institute supports and encourages young women across America with our speakers program, mentoring lunches, leadership and training seminars, publications and internship program. By promoting outstanding women leaders who advocate lower taxes, a strong national defense, free enterprise, limited government and strong families, the Luce Policy Institute provides support and role models for young women. We emphasize role models at home and at work with Clare Boothe Luce serving as an exemplar for many modern conservative women. For more information on all the Institute’s outreach activities, visit our website at www.cblpolicyinstitute.org.

Conservative Women Speakers Program Speaks Out for a Balanced View

Campus by campus, the word is getting out. Thanks to the energetic and active young people who call our offices every day looking to bring a balance to issue debates on college campuses, Luce speakers are taking conservative ideas on the road and lecturing to thousands of students across the nation. Many of these prominent conservative women are featured in this calendar. **Ann Coulter, Christina Hoff Sommers, Kellyanne Conway, Suzanne Fields, Michelle Malkin, Bay Buchanan and Shemane Nugent** are among the outstanding speakers offered by the Luce Policy Institute’s speakers program. Extensive interaction between speakers and students is typical of Luce Policy



Institute events. After hearing Ann Coulter speak, one student wrote, “I drove five hours from Miami of Ohio to hear this talk tonight and I know I could not have used my time any better. It was the experience of a lifetime!” Students’ lives are forever changed after hearing a successful conservative speaker at their school. For information on bringing a speaker to your campus, contact Program Director Lisa De Pasquale toll free at 1-888-891-4288.



To help support the Clare Boothe Luce Policy Institute or get more information about our work for women, please contact us.

Clare Boothe Luce Policy Institute
112 Elden Street, Suite P
Herndon, VA 20170
1-888-891-4288
www.cblpolicyinstitute.org

Board of Directors

Mary Beth Brown
Frank Donatelli
Michelle Easton
Darla Partridge
Randall Phillips
Helen Richardson

This calendar is published by the Clare Boothe Luce Policy Institute, a tax exempt 501(c)(3) organization. Contributions are eligible for a tax deduction.



Mentoring Events Inform and Affirm Young Women

The Luce Policy Institute's staff, board and close advisors are involved in mentoring America's most promising young women. The Luce Policy Institute hosts several high school and college mentoring lunches each year as a way to provide support and reach young women with conservative ideas. Mentoring lunch participants return to their campuses invigorated and ready to take leadership roles in their communities. These events give young women the unique opportunity to talk to other conservative women their age and to meet prominent women leaders. As one young woman states, "Not only was there a wonderful dialogue and mentoring, I met dozens of young women who feel the same way as I do — I didn't know anyone else my age believed the same things I did."

Tackling the Tough Issues

Often the major news organizations call on the leaders of radical feminist groups to speak for American women. The Clare Boothe Luce Policy Institute is engaged in a massive effort to educate the media and Americans on these phony leaders. Radical feminists claim to speak for all women, but their top priorities and views are inconsistent with those of most American women. Luce Policy Institute staff members appear on talk radio and television programs and write scores of opinion and policy op-ed pieces for national publications. From coast to coast, Americans are hearing from Luce staff members and speakers who offer common sense views and meaningful answers. The women featured in the 2005 Great American Conservative Women Calendar are just a few of the many conservative women role models provided by the Luce Policy Institute. They represent the majority of women in America who believe in the importance of freedom, faith and family. Many of these leaders are also featured in the Luce Policy Institute's book, *Great American Conservative Women*. Nationally syndicated radio show host Rush Limbaugh said, "It's long past due that someone put together a collection of ideas and philosophies from conservative women in print. Finally, something for the majority, from the majority!"

The book is available on Amazon.com and features the best talks from the Conservative Women's Network lunches that the Luce Policy Institute puts on monthly with The Heritage Foundation. The book explodes the liberal arrogance that if you want to be a successful woman you can't be a conservative. The outstanding leaders in the *Great American Conservative Women* book and calendar provide conservative solutions to the challenges of our time, refuting the liberal message.





Clare Boothe Luce



“

No good deed goes unpunished.

There are no hopeless situations; there are only men who have become hopeless about them.

They say women talk too much. If you have ever worked in Congress you know that the filibuster was invented by men."

"Do one thing well. You can have it all, but you will be very tired.

– Clare Boothe Luce

”

JANUARY 2005



SUNDAY	MONDAY	TUESDAY	WEDNESDAY	THURSDAY	FRIDAY	SATURDAY
DECEMBER S M T W T F S 1 2 3 4 5 6 7 8 9 10 11 12 13 14 15 16 17 18 19 20 21 22 23 24 25 26 27 28 29 30 31	FEBRUARY S M T W T F S 1 2 3 4 5 6 7 8 9 10 11 12 13 14 15 16 17 18 19 20 21 22 23 24 25 26 27 28					1 New Year's Day
2	3	4	5	6	7	8
9	10	11	12	13	14	15
16	17 Martin Luther King, Jr. Day	18	19	20	21	22
23	24	25	26	27	28	29
30	31					



Star Parker



“

I end up in the [welfare] system for years until one day I meet everyday folks, working in a small business in south-central Los Angeles, who look me in the eye and say, ‘Your lifestyle is unacceptable.’” ‘Unacceptable? That’s not a word you hear much in this country. Unacceptable? We’ve moved all of the rules. I can do whatever I want to any time I want to. The feminists said I belonged to myself. The leaders that represent me, because the wear the same color skin I do, told me America is inherently racist. . . And then they said, ‘You can believe all the lies of the Left if you want to, but your lifestyle is unacceptable to God.’ And I tell you, when I heard that word ‘God,’ I felt guilty.

– Star Parker

From “My Struggle from Welfare to Independence,”
Great American Conservative Women

”

FEBRUARY 2005



SUNDAY	MONDAY	TUESDAY	WEDNESDAY	THURSDAY	FRIDAY	SATURDAY
JANUARY S M T W T F S 1 2 3 4 5 6 7 8 9 10 11 12 13 14 15 16 17 18 19 20 21 22 23 24 25 26 27 28 29 30 31	MARCH S M T W T F S 1 2 3 4 5 6 7 8 9 10 11 12 13 14 15 16 17 18 19 20 21 22 23 24 25 26 27 28 29 30 31	1	2 Groundhog Day	3	4	5
6	7	8	9 Ash Wednesday Chinese New Year	10	11	12 Lincoln's Birthday
13	14 Valentine's Day	15	16	17 Conservative Political Action Conference in Washington, DC. February 17-19	18	19
20	21 Washington's Birthday (OBSERVED)	22 Washington's Birthday	23	24	25	26
27	28					



Christina Sommers



“

It is unfashionable to say so, but I will say it anyway: The energy, adventurousness, stoicism, and competitiveness of normal, decent males are responsible for much of what is right in the world. All ages understood this. If healthy societies appreciate and prize their young men. Why, in this day and age, should we be turning against them?. If you are an optimist, as I am, you believe that good sense and fair play will prevail. If you are a mother of sons, as I am, you know that one of the more agreeable facts of life is that boys will be boys.

– Christina Sommers

From "The War Against Boys," *Great American Conservative Women*

”

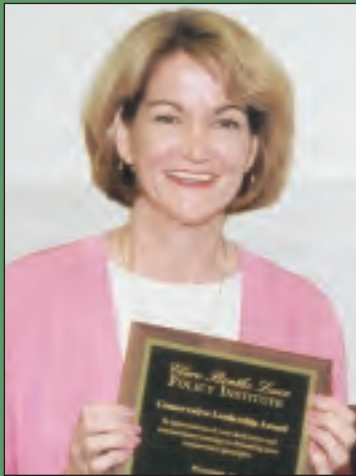
MARCH 2005



SUNDAY	MONDAY	TUESDAY	WEDNESDAY	THURSDAY	FRIDAY	SATURDAY
FEBRUARY S M T W T F S 1 2 3 4 5 6 7 8 9 10 11 12 13 14 15 16 17 18 19 20 21 22 23 24 25 26 27 28	APRIL S M T W T F S 1 2 3 4 5 6 7 8 9 10 11 12 13 14 15 16 17 18 19 20 21 22 23 24 25 26 27 28 29 30	1	2	3	4	5
6	7	8	9	10 Clare Boothe Luce born in 1903	11	12
13	14	15	16	17 St. Patrick's Day	18	19
20 First Day of Spring Palm Sunday	21	22	23	24	25 Good Friday	26
27 Easter Sunday	28	29	30	31		



Bay Buchanan



“

I go to college campuses. I talk to these young women, as brave a people I've ever met, who have spoken out on their college campuses. . . They're chastised, they're ostracized, they are literally jeered. They go up before their student bodies and the feminists show up and are screaming at them. This is on these wonderful campuses that are supposed to be for freedom of speech.

– Bay Buchanan

Luce Policy Institute's 2001 Conservative Leadership Seminar

”

APRIL 2005



SUNDAY	MONDAY	TUESDAY	WEDNESDAY	THURSDAY	FRIDAY	SATURDAY
MARCH S M T W T F S 1 2 3 4 5 6 7 8 9 10 11 12 13 14 15 16 17 18 19 20 21 22 23 24 25 26 27 28 29 30 31	MAY S M T W T F S 1 2 3 4 5 6 7 8 9 10 11 12 13 14 15 16 17 18 19 20 21 22 23 24 25 26 27 28 29 30 31				1 April Fools' Day	2
3 Daylight Saving Time Begins	4	5	6 Army Day	7	8	9
10	11	12	13	14	15	16
17	18	19	20	21	22	23
24 First Day of Passover	25	26	27	28	29	30



Dr. Laura Schlessinger



“

I deeply disdain the feminists for what they have done to generations of women and to children who pay the price of lost, intact, loving stable homes with married committed moms and dads. I'm not shy about making my feelings known. I guess it's no surprise that despite my rise to the top of a male-dominated profession, I'm not likely to be the feminist poster girl any time soon. But I cherish the fact that I am a hero to women and men of all ages who continue to revere our God-given roles and responsibilities.

– Dr. Laura Schlessinger

From "Authentic Feminism," *Great American Conservative Women*

”

MAY 2005



SUNDAY	MONDAY	TUESDAY	WEDNESDAY	THURSDAY	FRIDAY	SATURDAY
1 Passover Ends	2	3	4	5 National Day of Prayer	6	7
8 V-E Day Mother's Day	9	10	11	12	13 Clare Boothe Luce Policy Institute founded in Herndon, VA in 1993	14
15 Peace Officers' Memorial Day	16	17	18	19	20	21 Armed Forces Day
22	23	24	25	26	27	28
29	30 Memorial Day	31			APRIL S M T W T F S 1 2 3 4 5 6 7 8 9 10 11 12 13 14 15 16 17 18 19 20 21 22 23 24 25 26 27 28 29 30	JUNE S M T W T F S 1 2 3 4 5 6 7 8 9 10 11 12 13 14 15 16 17 18 19 20 21 22 23 24 25 26 27 28 29 30



Phyllis Schlafly



“

Ronald Reagan's military vision was firmly grounded in the principle of peace through strength — that America should have more power than any other country so that the bad guys won't push us around. The Clinton policy was exactly the opposite — use our superb military for any purpose the administration might think advantageous at the time.

– Phyllis Schlafly

From "The Legacy of Clinton's Web of Treaties,"
Great American Conservative Women

”

JUNE 2005



SUNDAY	MONDAY	TUESDAY	WEDNESDAY	THURSDAY	FRIDAY	SATURDAY
MAY S M T W T F S 1 2 3 4 5 6 7 8 9 10 11 12 13 14 15 16 17 18 19 20 21 22 23 24 25 26 27 28 29 30 31	JULY S M T W T F S 3 4 5 6 7 8 9 10 11 12 13 14 15 16 17 18 19 20 21 22 23 24 25 26 27 28 29 30 31		1	2	3	4
5	6 D-Day	7	8	9	10	11
12	13	14 Flag Day	15	16	17	18
19 Father's Day	20	21 First Day of Summer	22	23	24	25
26	27	28	29	30		



Ann Coulter



“

No good deed goes unpunished.

– Ann Coulter

”

Forthcoming excerpt from *How to Talk to a Liberal (If You Must)*

JULY 2005



SUNDAY	MONDAY	TUESDAY	WEDNESDAY	THURSDAY	FRIDAY	SATURDAY
JUNE S M T W T F S 1 2 3 4 5 6 7 8 9 10 11 12 13 14 15 16 17 18 19 20 21 22 23 24 25 26 27 28 29 30	AUGUST S M T W T F S 1 2 3 4 5 6 7 8 9 10 11 12 13 14 15 16 17 18 19 20 21 22 23 24 25 26 27 28 29 30 31				1	2
3	4 Independence Day	5	6	7	8	9
10	11	12	13	14	15	16
17	18	19	20	21	22	23
24 31	25	26	27 National Korean War Veterans Armistice Day	28	29	30



Michelle Malkin



“

When conservative women say ‘Have some self-respect,’ liberals in the media call us self-righteous. When conservative women say promiscuity is degrading and self-destructive, liberals in the media call us prudes. When liberals won't clam up about their sordid sex lives and we object, they call us rude. When liberal women raise their voices, they are praised as ‘passionate.’ When conservative women raise their voices, we are condemned as ‘shrill.’

– Michelle Malkin

From the Luce Policy Institute's 2004 Conservative Leadership Seminar

”

AUGUST 2005



SUNDAY	MONDAY	TUESDAY	WEDNESDAY	THURSDAY	FRIDAY	SATURDAY
	1 Air Force Day	2	3	4 Coast Guard Day	5	6
7	8	9	10	11	12	13
14	15	16	17	18	19	20
21	22	23	24	25	26	27
28	29	30	31		JULY S M T W T F S 1 2 3 4 5 6 7 8 9 10 11 12 13 14 15 16 17 18 19 20 21 22 23 24 25 26 27 28 29 30 31	SEPTEMBER S M T W T F S 1 2 3 4 5 6 7 8 9 10 11 12 13 14 15 16 17 18 19 20 21 22 23 24 25 26 27 28 29 30



Condoleezza Rice



“

No less than December 7th, 1941, September 11th, 2001 forever changed the lives of every American and the strategic perspective of the United States. That day produced an acute sense of our vulnerability to attacks hatched in distant lands that come without warning, bringing tragedy to our shores. In response, we resolved to take the fight to the terrorists themselves; to use all instruments of our national power to root out terror networks; and to hold accountable states that harbor terrorists.

– Condoleezza Rice

From Convention of the National Association of Black Journalists, August 7, 2003

”

SEPTEMBER 2005



SUNDAY	MONDAY	TUESDAY	WEDNESDAY	THURSDAY	FRIDAY	SATURDAY
AUGUST S M T W T F S 1 2 3 4 5 6 7 8 9 10 11 12 13 14 15 16 17 18 19 20 21 22 23 24 25 26 27 28 29 30 31	OCTOBER S M T W T F S 1 2 3 4 5 6 7 8 9 10 11 12 13 14 15 16 17 18 19 20 21 22 23 24 25 26 27 28 29 30 31			1	2	3
4	5 Labor Day	6	7	8	9 V-J Day	10
11 Patriot Day	12	13	14	15	16	17 Citizenship Day
18	19 POW/MIA Recognition Day	20	21	22 First Day of Autumn	23	24
25	26	27	28	29	30	



Monica Crowley



“

You can not destroy terrorism without dealing with the regimes that support it. On September 10, 2001 there were eight regimes in the world that supported international terror: Iran, Iraq, Syria, Libya, Afghanistan, Pakistan, Saudi Arabia and North Korea. In three short years since the 9/11 attack, we have effected regime changes in two of those eight. Libya saw this and they did a preempted surrender. So that leaves us with five regimes out of the eight. Think of about that, an outstanding feat in three short years.

– Monica Crowley

From Conservative Women's Network lunch
on July 21, 2004

”

OCTOBER 2005



SUNDAY	MONDAY	TUESDAY	WEDNESDAY	THURSDAY	FRIDAY	SATURDAY
SEPTEMBER S M T W T F S 1 2 3 4 5 6 7 8 9 10 11 12 13 14 15 16 17 18 19 20 21 22 23 24 25 26 27 28 29 30	NOVEMBER S M T W T F S 1 2 3 4 5 6 7 8 9 10 11 12 13 14 15 16 17 18 19 20 21 22 23 24 25 26 27 28 29 30					1
2	3	4 Rosh Hashanah	5	6	7	8
9 Clare Boothe Luce dies in 1987	10 Columbus Day	11	12	13 Yom Kippur	14	15
16	17	18	19	20	21	22
23 Daylight Saving Time Ends 30	24 Halloween 31	25	26	27 Navy Day	28	29



Jeanne Kirkpatrick



“

People have often said to me, what did I do that was the most interesting thing in my life. The answer is having a baby. That was by far the most important, exciting experience for my life.

Having and raising babies is more interesting than making speeches at the United Nations.

Believe me.

– Jeanne Kirkpatrick

From “Women Should Refuse to Choose
Between Family and Career,”
Great American Conservative Women

”

NOVEMBER 2005



SUNDAY	MONDAY	TUESDAY	WEDNESDAY	THURSDAY	FRIDAY	SATURDAY
OCTOBER S M T W T F S 1 2 3 4 5 6 7 8 9 10 11 12 13 14 15 16 17 18 19 20 21 22 23 24 25 26 27 28 29 30 31	DECEMBER S M T W T F S 1 2 3 4 5 6 7 8 9 10 11 12 13 14 15 16 17 18 19 20 21 22 23 24 25 26 27 28 29 30 31	1	2	3	4	5
6	7	8 Election Day	9 World Freedom Day	10 Marine Corps Day	11 Veterans Day	12
13	14	15	16	17 Thanksgiving Day	18	19
20	21 Dedication of Institute's Headquarters in 2003	22	23	24	25	26
27	28	29	30			



Shemane Nugent



“

The Second Amendment is a commandment we must defend. . . You should be very suspicious of anyone who wants to make you defenseless.

– Shemane Nugent

From Conservative Women's Network, May 7, 2004

”

DECEMBER 2005



SUNDAY	MONDAY	TUESDAY	WEDNESDAY	THURSDAY	FRIDAY	SATURDAY
NOVEMBER S M T W T F S 1 2 3 4 5 6 7 8 9 10 11 12 13 14 15 16 17 18 19 20 21 22 23 24 25 26 27 28 29 30	JANUARY S M T W T F S 1 2 3 4 5 6 7 8 9 10 11 12 13 14 15 16 17 18 19 20 21 22 23 24 25 26 27 28 29 30 31			1	2	3
4	5	6	7 Pearl Harbor Day	8	9	10
11	12	13	14	15	16	17
18	19	20	21 First Day of Winter	22	23	24
25 Christmas Day	26 First Day of Hanukah	27	28	29	30	31 New Year's Eve



Clare Boothe Luce
Great American Conservative Women

Clare Boothe Luce Policy Institute
112 Elden Street, Suite P, Herndon, VA 20170
1-888-891-4288 • www.cblpolicyinstitute.org