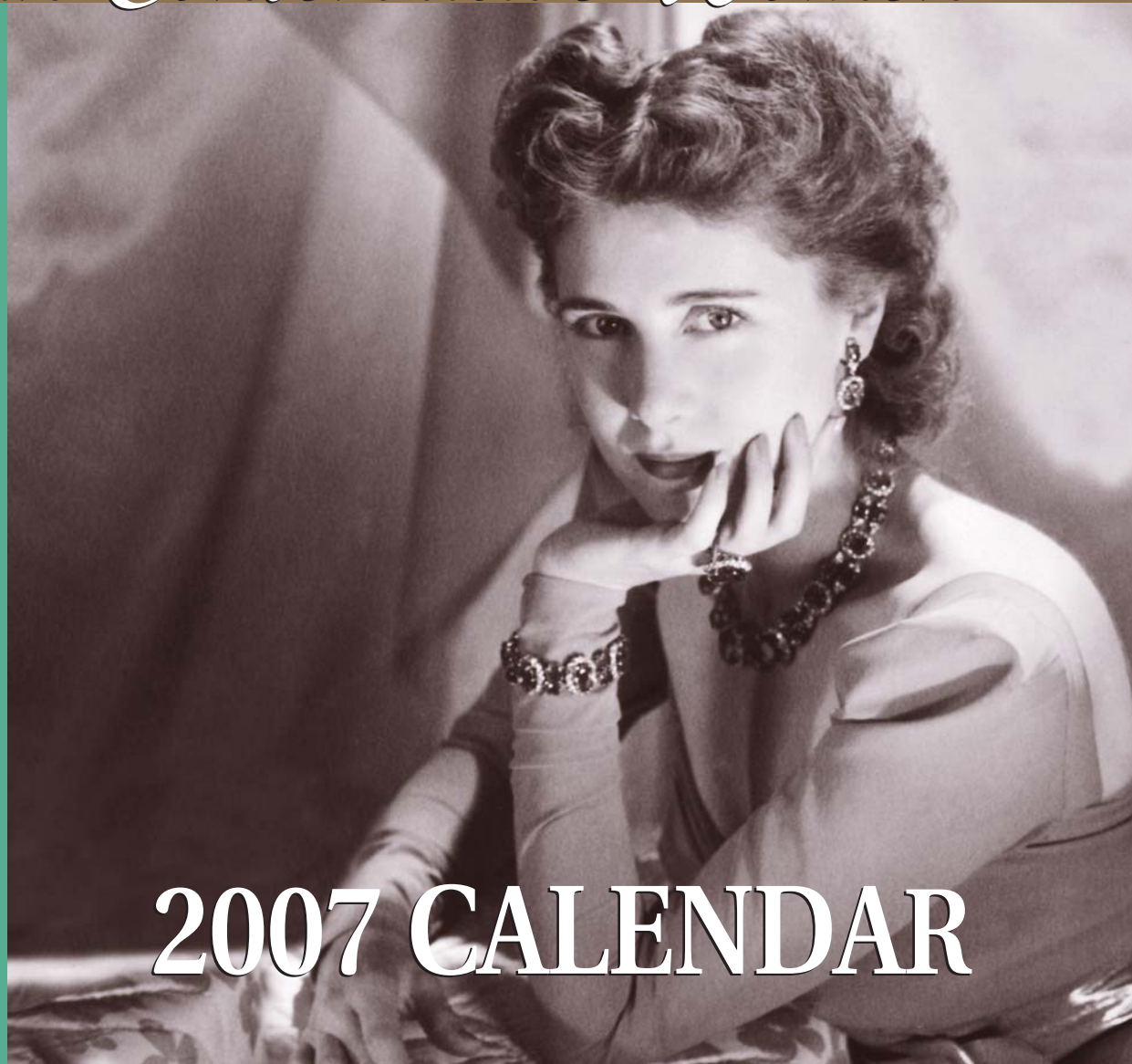
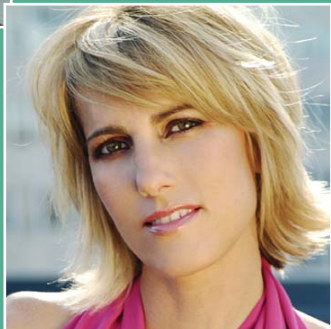




Clare Boothe Luce POLICY INSTITUTE

Great American Conservative Women



2007 CALENDAR



“

The Clare Boothe Luce Policy Institute's commitment to fostering leadership in young women is important and appreciated.

— Vice President Dick Cheney

”

Inspiring Women. Discovering Leaders. Changing Lives. This is what we work for at the Clare Boothe Luce Policy Institute. The Luce Policy Institute is one of the most unique organizations in America. Founded in 1993, the Luce Policy Institute strives to advance conservative ideas through America's women.

Through our Conservative Women Speakers Program, mentoring lunches, V-Day Unveiled campaign, publications, and internships, we strive to engage, inform, and connect conservative women across the country. By providing them with the resources, role models, and encouragement they need, we help students prepare for future success in their lives.

We promote mentors and women leaders who are committed to the constitutional principles upon which our nation was established: individual freedom, economic liberty, limited government, personal responsibility, and traditional values. These women are journalists, public policy experts, columnists, government officials, academicians, authors, talk radio hosts, legislators, as well as leaders of conservative organizations. Many of them are also devoted wives, mothers, and women of faith.

Our programs and initiatives stress the importance of moral values, strength of character, academic excellence, integrity, and a strong work ethic. We also support ideas and efforts that are pro-America, pro-free enterprise, pro-religion, and pro-family.

For more information on all of the Institute's outreach activities, visit our website at www.cblpi.org.

Conservative Women Speak Out for a Balanced View

Our Conservative Women Speakers Program is one of our most effective tools in spreading conservative ideas and values to the next generation. Thanks to energetic and active young people who contact us every day looking to bring a balance to issue debates on college campuses, Luce speakers are taking conservative ideas on the road and lecturing to thousands of students across the country. Many of these prominent conservative women are featured in this calendar. **Ann Coulter, Star Parker, and Michelle Malkin** are among the outstanding speakers who participate in the Luce Policy Institute's Speakers Program. Extensive interaction between speakers and students is typical of Luce Policy Institute events. After bringing Ann Coulter to speak at Wellesley College, Frances McVay wrote, "This was a very positive experience for Wellesley. Ms. Coulter is such an intelligent woman, and the mostly liberal-leaning students who attended the lecture recognized that. Conservative women are now on the radar of Wellesley students." Students' lives are forever changed after hearing a successful conservative speaker at their school. For information on bringing a speaker to your campus, contact us at our toll free number 1-888-891-4288.



Top: Congresswoman Jean Schmidt meets students after speaking with them at the Institute's 2006 Conservative Leadership Seminar. *Photo courtesy of Twin Lens Photo.* **Center:** Summer 2006 Clare Boothe Luce Policy Institute interns, from left: Chenoa McKnight of Brigham Young University, Samantha Soller of Bucknell University, Marianne Brennan of the College of Charleston, and Carissa Marquis of Southwestern Oklahoma State University. **Bottom right:** Institute Board member Helen Richardson and Miss America 2003 Erika Harold at the 2003 Woman of the Year and National Mentoring Lunch; **Top Left:** Clare Boothe Luce in 1934 while managing editor at Vanity Fair.





Note from
Michelle Easton, President
Clare Boothe Luce Policy Institute

The Clare Boothe Luce Policy Institute is pleased to present our 2007 Great American Conservative Women Calendar. The Luce Policy Institute impacts the lives of young women by introducing them to outstanding role models like the impressive women featured in this calendar. The values and leadership of these great women change young people's lives!

I hope you enjoy this unique calendar and celebrate with us these wonderful leaders in the Conservative Movement. The Institute is especially thankful to Helen Richardson for her support of the 2007 Great American Conservative Women Calendar. For more information about the Clare Boothe Luce Policy Institute's work with women, please contact us at:

Clare Boothe Luce Policy Institute
112 Elden Street, Suite P
Herndon, VA 20170
1-888-891-4288
www.cblpi.org

Board of Directors

Michelle Easton, President
Frank J. Donatelli, Treasurer
Mary Beth Brown
Barbara Wells Kenney
Darla Partridge
Randall Phillips
Helen Richardson

This calendar is published by the Clare Boothe Luce Policy Institute, a tax exempt 501(c)(3) organization.

Mentoring Events Inform and Affirm Young Women

The Luce Policy Institute's staff, board and close advisors are involved in mentoring America's most promising young women. The Luce Policy Institute regularly hosts high school and college mentoring lunches as a way to provide support and reach young women with conservative ideas. Mentoring lunch participants return to their campuses invigorated and ready to take leadership roles in their communities. These events give young women the unique opportunity to talk to other conservative women their age and to meet prominent women leaders. Laura Bush, of LeMoyne College, wrote, "I hoped to learn how conservative women become involved in the movement and able to balance these dreams with family and motherhood. This workshop met my expectations and went above and beyond in giving me insight."

Tackling the Tough Issues

Often the major news organizations call on the leaders of radical feminist groups to speak for American women. The Clare Boothe Luce Policy Institute is engaged in a massive effort to educate the media and Americans on these phony leaders. Radical feminists claim to speak for all women, but their top priorities and views are inconsistent with those of most American women. Luce Policy Institute staff members appear on talk radio and television programs and write opinion and policy op-ed pieces for national publications. From coast to coast, Americans are hearing from Luce staff members and speakers who offer common sense views and meaningful answers. The women featured in the 2007 Great American Conservative Women Calendar are just a few of the many conservative women role models promoted by the Luce Policy Institute. They represent the majority of women in America who believe in the importance of freedom, faith, and family. Many of these leaders are also featured in the Luce Policy Institute's book, *Great American Conservative Women*. Nationally syndicated radio show host Rush Limbaugh said, "It's long past due that someone put together a collection of ideas and philosophies from conservative women in print. Finally, something for the majority, from the majority!"

The book is available on Amazon.com and features the best talks from the Conservative Women's Network lunches that the Luce Policy Institute hosts monthly with The Heritage Foundation. The book explodes the liberal arrogance that if you want to be a successful woman you can't be a conservative. The outstanding leaders in the *Great American Conservative Women* book and calendar provide conservative solutions to the challenges of our time, refuting the liberal message.



Top: Jane Hampton Cook, author of *The Faith of America's First Ladies*, signs her book at the June 2006 Conservative Women's Network lunch in Washington, DC. *Photo courtesy of Twin Lens Photo.*

Middle: Institute Board of Directors (from left): Mary Beth Brown, Darla Partridge, Randall Phillips, Michelle Easton, Frank Donatelli and Barbara Wells Kenney. **Bottom:** Luce Institute speaker and Virginia GOP Chairman Kate Griffin mentors students at the Institute's Women and Career Development Workshop held in February 2006 in Washington, DC. *Photo courtesy of Twin Lens Photo.*

Clare Boothe Luce was a foreign and domestic journalist, magazine editor, playwright, Congresswoman from Connecticut, and Ambassador to Italy. She was a leader in the free world's opposition to communism, an outspoken advocate of free enterprise, and a woman devoted to her family. Born just three years after the turn of the century, her astounding personal and public accomplishments made it natural that the title "The Woman of the Century" was bestowed upon her after her death in 1987.



PHOTO COURTESY OF CLARE LUCE ABBEY, STEP-GRANDDAUGHTER OF MRS. LUCE



“

I refuse the compliment I think like a man, thoughts have no sex, one either thinks or one does not.

Courage is the ladder on which all other virtues mount.

In the final analysis there is no other solution to man's progress but the day's honest work, the day's honest decision, the day's generous influence, and the day's good deed.

– Clare Boothe Luce
1903 – 1987

”

Clare Boothe Luce with her namesake Clare Luce Abbey in Honolulu, Hawaii, 1979. Photo Courtesy of Clare Luce Abbey.

JANUARY 2007

GREAT AMERICAN CONSERVATIVE WOMEN



SUNDAY	MONDAY	TUESDAY	WEDNESDAY	THURSDAY	FRIDAY	SATURDAY
	1 <small>New Year's Day</small>	2	3	4	5	6
7	8	9	10	11	12	13
14	15 <small>Martin Luther King, Jr. Day</small>	16	17	18	19	20
21	22	23	24	25	26	27
28	29	30	31		DECEMBER S M T W T F S 1 2 3 4 5 6 7 8 9 10 11 12 13 14 15 16 17 18 19 20 21 22 23 24 25 26 27 28 29 30 31	FEBRUARY S M T W T F S 1 2 3 4 5 6 7 8 9 10 11 12 13 14 15 16 17 18 19 20 21 22 23 24 25 26 27 28

Star Parker is president and founder of the Coalition on Urban Renewal and Education. She is the author of *White Ghetto: How Middle Class America Reflects Inner City Decay* (2006), *Uncle Sam's Plantation: How Big Government Enslaves America's Poor and What We Can Do About It* (2003), *Pimps, Whores and Welfare Brats: From Welfare Cheat to Conservative Messenger* (1997). Prior to her conservative activism, she was a single welfare mother in Los Angeles. She reformed her life, received a degree in marketing, and launched an urban Christian magazine.



COURTESY OF THE COALITION ON URBAN RENEWAL AND EDUCATION



“

[D]ecades of liberal propaganda have seduced millions of Americans into believing that they are owed something, that someone else is at fault for their problems, and that the federal government had better do something about it — or else. Categorizing and labeling these victim groups allows liberal politicians to gain ideological control over group members.

Conservatism as a philosophy understands the inseparable link between liberty and private ownership of property.

— *Star Parker*

From *White Ghetto: How Middle Class America Reflects Inner City Decay*

”

Luce Policy Institute speaker Star Parker talks with author Kim Schuld at the Luce Institute's February 2004 Conservative Women's Network Lunch in Washington, DC. Photo courtesy of Twin Lens Photo.

FEBRUARY 2007

GREAT AMERICAN CONSERVATIVE WOMEN



Clare Boothe Luce
POLICY INSTITUTE

SUNDAY	MONDAY	TUESDAY	WEDNESDAY	THURSDAY	FRIDAY	SATURDAY
JANUARY S M T W T F S 1 2 3 4 5 6 7 8 9 10 11 12 13 14 15 16 17 18 19 20 21 22 23 24 25 26 27 28 29 30 31	MARCH S M T W T F S 1 2 3 4 5 6 7 8 9 10 11 12 13 14 15 16 17 18 19 20 21 22 23 24 25 26 27 28 29 30 31			1 National Freedom Day	2 Groundhog Day	3
4	5	6	7	8	9	10
11	12 Lincoln's Birthday	13	14 Valentine's Day	15	16	17
18 Chinese New Year	19 President's Day Washington's Birthday (OBSERVED)	20	21 Ash Wednesday	22 Washington's Birthday	23	24
25	26	27	28			

Marsha Blackburn, U.S.

Representative from Tennessee, has been called a “rising star” by the Capitol Hill newspaper, *Roll Call*, and a “top conservative” by *National Journal*. Blackburn serves as an Assistant Majority Whip in Congress and serves on the House Energy and Commerce Committee. A frequent guest on national political radio and television programs, Blackburn was chairman of one of Tennessee's fastest growing county Republican Parties and served in the state senate from 1998 to 2002. A small business owner for nearly 25 years, Blackburn graduated from Mississippi State University where she paid her way through college by selling books door-to-door with the Southwestern Company. She and her husband, Chuck, have two children.



PHOTO COURTESY OF CONGRESSMAN BLACKBURN



“

One of the things I think is so important when you look at women in leadership is that we as women develop our careers different ways. We take time off from work.... [W]e don't follow a necessarily set corporate path, but I think it's important that we remember leadership is a transferable commodity. The skills you are learning in school and in college and then going into your career, you are going to gather and bundle up those skills. We women are collectors; we love to collect people, and we love to collect memories, and at the same time, we should be collecting up those leadership skills and using those in the public sector, using them in the political sector.

— *Congressman Marsha Blackburn*

From the Luce Policy Institute's May 2006
Conservative Women's Network lunch in
Washington, DC.

”

Congressman Marsha Blackburn speaks with an attendee at the May 2006 Conservative Women's Network lunch in Washington, DC. Photo courtesy of Twin Lens Photo.

MARCH 2007

GREAT AMERICAN CONSERVATIVE WOMEN



SUNDAY	MONDAY	TUESDAY	WEDNESDAY	THURSDAY	FRIDAY	SATURDAY
FEBRUARY S M T W T F S 1 2 3 4 5 6 7 8 9 10 11 12 13 14 15 16 17 18 19 20 21 22 23 24 25 26 27 28	APRIL S M T W T F S 1 2 3 4 5 6 7 8 9 10 11 12 13 14 15 16 17 18 19 20 21 22 23 24 25 26 27 28 29 30			1	2	3
4	5	6	7	8	9	10 Clare Boothe Luce born in 1903
11 Daylight Savings Time Begins	12	13	14	15	16	17 St. Patrick's Day
18	19	20 First Day of Spring	21	22	23	24
25	26	27	28	29	30	31

Sandy Froman is President of the National Rifle Association, America's foremost defender of the individual constitutionally-guaranteed right to keep and bear arms. Froman is a national spokesperson on legal, political and policy issues relating to firearms and the Second Amendment. As an NRA-certified instructor, she promotes firearms education, training and use for all lawful purposes, especially among women. An attorney in private civil practice in Tucson, Arizona, Froman is listed in Best Lawyers in America. She holds an undergraduate degree in economics with honors from Stanford University and a Juris Doctor degree from Harvard Law School.



PHOTO COURTESY OF MICHAEL IVES-AM



“

Women refuse to be stereotyped. There are organizations out there saying that if you refuse to believe a certain way, if you refuse to adopt some talking point of the Left, then you're anti-woman. Such organizations claim to speak for women and they act as if any female who fundamentally disagrees with them or their leftist ideas, is somehow less of a woman than one of them. That's just flat out false. [The Clare Boothe Luce Policy Institute] is one of the organizations that proves that. On every policy area and political concern in America, there are women on both sides of the issue.

— Sandy Froman

From the Luce Institute's May 2005 Conservative Women's Network lunch in Washington, DC.

”

Sandy Froman with Summer 2005 Luce Institute interns Danielle Sturgis and Hillary Hippert at the May 2005 Conservative Women's Network lunch in Washington, DC. Photo courtesy of Twin Lens Photo.

APRIL 2007

GREAT AMERICAN CONSERVATIVE WOMEN



SUNDAY	MONDAY	TUESDAY	WEDNESDAY	THURSDAY	FRIDAY	SATURDAY
1 Palm Sunday April Fools' Day	2	3 First Day of Passover	4	5	6 Good Friday	7
8 Easter Sunday	9	10 Passover Ends	11	12 Army Day	13	14
15	16	17	18	19	20	21
22	23	24	25	26	27	28
29	30				MARCH S M T W T F S 1 2 3 4 5 6 7 8 9 10 11 12 13 14 15 16 17 18 19 20 21 22 23 24 25 26 27 28 29 30 31	MAY S M T W T F S 1 2 3 4 5 6 7 8 9 10 11 12 13 14 15 16 17 18 19 20 21 22 23 24 25 26 27 28 29 30 31

Michelle Malkin is a nationally syndicated columnist and Fox News contributor. She is the author of three New York Times' bestsellers, *Unhinged: Exposing Liberals Gone Wild* (2005), *In Defense of Internment: The Case for 'Racial Profiling' in World War II and the War on Terror* (2004), and *Invasion: How America Still Welcomes Terrorists, Criminals and Other Foreign Menaces to Our Shores* (2002). She was the recipient of the Luce Institute's 2006 Woman of the Year Award. Her blog, MichelleMalkin.com, averages more than 120,000 hits per day and her new venture, hotair.com, averages 40,000 hits per day. Michelle and her husband, Jesse, have two children.



PHOTO COURTESY OF REGNERY PUBLISHING



“

Mocking a woman's decision to give up work and raise children at home is not something that a presidential candidate's wife should do either.

But 'cheeky' Teresa Heinz Kerry seemed not to care about ridiculing millions of stay-at-home moms.

Following in the footsteps of Hillary 'I suppose I could have stayed home and baked cookies and had teas' Clinton, the cranky ketchup heiress told USA Today that First Lady Laura

Bush-a former librarian, schoolteacher, and stay-at-home mom-had never held down 'a real job.' As any librarian, schoolteacher, or stay-at-home mom can attest, that is truly nuts.

— Michelle Malkin

From *Unhinged: Exposing Liberals Gone Wild*

”

Luce Institute speaker Michelle Malkin with young women at the 2006 Woman of the Year and National Mentoring Luncheon. Photo courtesy of Twin Lens Photo.

MAY 2007

GREAT AMERICAN CONSERVATIVE WOMEN



SUNDAY	MONDAY	TUESDAY	WEDNESDAY	THURSDAY	FRIDAY	SATURDAY
		1	2	3 National Day of Prayer	4	5
6	7 V-E Day	8	9	10	11	12
13 Clare Boothe Luce Policy Institute founded in Herndon, VA in 1993 Mother's Day	14	15	16	17	18	19 Armed Forces Day
20	21	22	23	24	25	26
27	28 Memorial Day (observed)	29	30	31	APRIL S M T W T F S 1 2 3 4 5 6 7 8 9 10 11 12 13 14 15 16 17 18 19 20 21 22 23 24 25 26 27 28 29 30	JUNE S M T W T F S 1 2 3 4 5 6 7 8 9 10 11 12 13 14 15 16 17 18 19 20 21 22 23 24 25 26 27 28 29 30

Laura Ingraham is the author of *Shut Up & Sing: How the Elites in Hollywood, Politics, and the UN are Subverting America* (2003) and *The Hillary Trap* (2000). She launched “The Laura Ingraham Show” in 2001 and today it is broadcast on 304 radio stations. A television commentator, she has appeared on shows such as *The O'Reilly Factor* and CNN's *Reliable Sources*. A graduate of the University of Virginia School of Law, she worked as a speechwriter during the final two years of the Reagan Administration and served as a law clerk to Supreme Court Justice Clarence Thomas.



PHOTO COURTESY OF TALK RADIO NETWORK



“

Tens of thousands of American soldiers in the last 230 years have put their lives on the line and died to protect our values and our lives. Our blood has been spilt and our treasure has been spent fighting for this Republic. The elites don't respect that, because when it comes to America, they just don't get it. They don't understand that America is different, that we are the exceptional nation, the world's last best hope. We are not greedy, and we are not imperialist, and we are not evil. We are not infallible, but we mean well and do well. We are a lion, slow to anger but ferocious when attacked. We are the Good Guys.

— Laura Ingraham

From *Shut Up & Sing: How Elites from Hollywood, Politics, and the UN Are Subverting America*

”

Laura Ingraham pictured here with the troops during her recent trip to Iraq. Photo courtesy of www.lauraingraham.com.

JUNE 2007

GREAT AMERICAN CONSERVATIVE WOMEN



SUNDAY	MONDAY	TUESDAY	WEDNESDAY	THURSDAY	FRIDAY	SATURDAY
MAY S M T W T F S 1 2 3 4 5 6 7 8 9 10 11 12 13 14 15 16 17 18 19 20 21 22 23 24 25 26 27 28 29 30 31	JULY S M T W T F S 1 2 3 4 5 6 7 8 9 10 11 12 13 14 15 16 17 18 19 20 21 22 23 24 25 26 27 28 29 30 31				1	2
3	4	5	6 D-Day	7	8	9
10	11	12	13	14 Flag Day	15	16
17 Father's Day	18	19	20	21 First Day of Summer	22	23
24	25	26	27	28	29	30

Erika Harold spent her reign as Miss America 2003 promoting her platform, "Preventing Youth Violence and Bullying: Respect Yourself, Protect Yourself." She is a Phi Beta Kappa graduate of the University of Illinois and is currently attending Harvard Law School. In February of 2003, the Luce Institute awarded her its Woman of the Year Award for her courage in standing up for conservative principles.



PHOTO COURTESY OF THE MISS AMERICA FOUNDATION AND THE HAROLD FAMILY



“

I've often heard it said that young people are the leaders of tomorrow. But I've always believed that young people who are willing to take a stand for what they believe in can become the leaders of this very moment.

— *Erika Harold*

From a speech given to the Harvard University College Republicans.

”

Erika Harold speaks with a student at the Luce Institute's 2003 Woman of the Year Award and National Mentoring Lunch in Washington, DC. Photo courtesy of Twin Lens Photo.

JULY 2007

GREAT AMERICAN CONSERVATIVE WOMEN

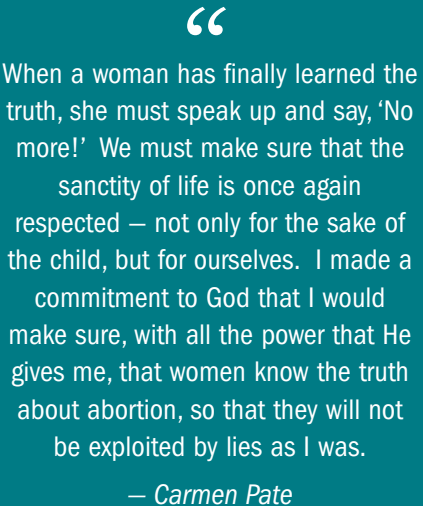


SUNDAY	MONDAY	TUESDAY	WEDNESDAY	THURSDAY	FRIDAY	SATURDAY
1	2	3	4 Independence Day	5	6	7
8	9	10	11	12	13	14
15	16	17	18	19	20	21
22	23	24	25	26	27	28
29	30	31			JUNE S M T W T F S 1 2 3 4 5 6 7 8 9 10 11 12 13 14 15 16 17 18 19 20 21 22 23 24 25 26 27 28 29 30	AUGUST S M T W T F S 1 2 3 4 5 6 7 8 9 10 11 12 13 14 15 16 17 18 19 20 21 22 23 24 25 26 27 28 29 30 31

Carmen Pate is co-host of the radio talk show *Point of View*, which is based in Dallas, Texas and is syndicated on over 215 stations across America. She served as the president of Concerned Women of America from 1996-2000. She has regularly appeared on television, radio, and in print, addressing issues that affect women and families. Prior to joining CWA, she served as the executive director of the End Hunger Network Houston. She has also served as the executive director of a crisis pregnancy center in Texas. Carmen is married to Bob Pate, is the mother of three adult children, and proud grandmother of five.



PHOTO COURTESY OF YBC PHOTOGRAPHY & DESIGN



”

Carmen Pate talks with young women at the July 1999 Conservative Women's Network lunch in Washington, DC. *Photo courtesy of Twin Lens Photo.*

AUGUST 2007

GREAT AMERICAN CONSERVATIVE WOMEN



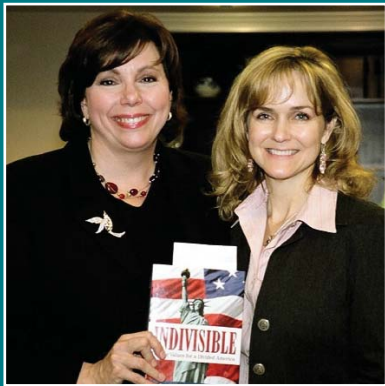
Clare Boothe Luce
POLICY INSTITUTE

SUNDAY	MONDAY	TUESDAY	WEDNESDAY	THURSDAY	FRIDAY	SATURDAY
<div>JULY</div> <div>S M T W T F S</div> <div>1 2 3 4 5 6 7</div> <div>8 9 10 11 12 13 14</div> <div>15 16 17 18 19 20 21</div> <div>22 23 24 25 26 27 28</div> <div>29 30 31</div>	<div>SEPTEMBER</div> <div>S M T W T F S</div> <div>2 3 4 5 6 7 8</div> <div>9 10 11 12 13 14 15</div> <div>16 17 18 19 20 21 22</div> <div>23 24 25 26 27 28 29</div> <div>30</div>		1	2	3	4
5	6	7	8	9	10	11
12	13	14	15	16	17	18
19	20	21	22	23	24	25
26	27	28	29	30	31	

Rebecca Hagelin has championed conservative ideas for more than 20 years. She is Vice President of Communications and Marketing at The Heritage Foundation. Her weekly column, "Heart Beat" appears on *WorldNetDaily.com*, *Townhall.com*, *UPI*, and other outlets around the country. Hagelin has been a radio commentator for Salem Communications and is a frequent guest co-host on various radio shows. She is the author of *Home Invasion: Protecting Your Family In A Culture That's Gone Stark Raving Mad*, authors many articles, and is a veteran of hundreds of radio, television, newspaper, and magazine interviews. Rebecca also speaks to a variety of audiences on family issues. She and her husband, Andy, have three children.



PHOTO COURTESY OF REGNERY PUBLISHING



“

All too often, I come across parents who have given up the responsibility of serving as their children's guides. They shrug their shoulders, roll their eyes, and say, 'Well, they are going to be exposed to the stuff I don't like, but that's the world.' This defeatist attitude is often masked as having an 'open mind'—as if there is some virtue to exposing children to a culture immersed in sexual images, self-indulgence, and disrespect for authority. I'm often accused of 'sheltering' my children ... of being 'protective.' Sheltering? Protective? You bet I am! I'm the mamma.

— Rebecca Hagelin

From *Home Invasion: Protecting Your Family In a Culture That's Gone Stark Raving Mad*

”

Rebecca Hagelin introduced Conservative Women'S Network luncheon speaker and Atlanta talk radio host Martha Zoller at the February 2006 CWN. Photo courtesy of Twin Lens Photo.

SEPTEMBER 2007

GREAT AMERICAN CONSERVATIVE WOMEN



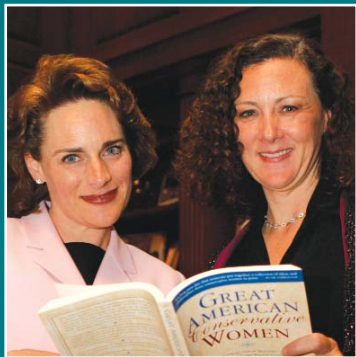
SUNDAY	MONDAY	TUESDAY	WEDNESDAY	THURSDAY	FRIDAY	SATURDAY
AUGUST S M T W T F S 1 2 3 4 5 6 7 8 9 10 11 12 13 14 15 16 17 18 19 20 21 22 23 24 25 26 27 28 29 30 31	OCTOBER S M T W T F S 1 2 3 4 5 6 7 8 9 10 11 12 13 14 15 16 17 18 19 20 21 22 23 24 25 26 27 28 29 30 31					1 V-J Day
2	3 Labor Day	4	5	6	7	8
9	10 Citizenship Day	11 Patriot Day	12	13 Rosh Hashanah	14	15
16	17 Citizenship Day	18	19	20	21	22 Yom Kippur
23 First Day of Autumn 30	24	25	26	27	28	29

Cameron Randall

Phillips is a longtime Conservative activist, having served as National Honorary Chairman of Youth for President Reagan in 1980 and 1984, and President Bush in 1988. During the 1990's, Randall was a reporter and producer for CBN News where she covered Capitol Hill, the State Department, Education and the White House. As a child, Randall was one of the young stars of the Broadway show ANNIE. In addition to 680 performances as one of the orphans, she also served as understudy to Annie, playing the title role a number of times. Randall has her own media consulting company, Spectrum Media, Inc., and still writes and records music. She also serves on the Board of Directors of the Clare Boothe Luce Policy Institute. Randall and her husband, Tom Phillips, have two small sons.



PHOTO COURTESY OF DOUG DEMARK PHOTOGRAPHY LLC.



“

What I learned on stage taught me the very basics of conservatism. First and foremost is responsibility. As you know, I'm sure, one of the biggest problems in our society is that nobody wants to take responsibility for anything. If you fail at school, you blame it on repressed memory syndrome. If you can't keep a job, your mother looked at you cross-eyed when you were a baby. If you get pregnant out of wedlock, your teacher didn't teach you how to use a condom. But my family taught me responsibility. That's probably what made me such a good cast member — I was responsible.

— Randall Phillips

From the Luce Institute's *Great American Conservative Women* book, available on Amazon.com

”

Luce Institute Board Member Randall Phillips and Luce speaker and President of Regnery Publishing Marji Ross look through *Great American Conservative Women*, the Luce Institute's unique book available on Amazon.com. Photo courtesy of Doug DeMark Photography LLC.

OCTOBER 2007

GREAT AMERICAN CONSERVATIVE WOMEN



SUNDAY	MONDAY	TUESDAY	WEDNESDAY	THURSDAY	FRIDAY	SATURDAY
	1	2	3	4	5	6
7	8 Columbus Day	9 Clare Boothe Luce died in 1987	10	11	12	13
14	15	16	17	18	19	20
21	22	23	24	25	26	27
28	29	30	31 Halloween		SEPTEMBER S M T W T F S 1 2 3 4 5 6 7 8 9 10 11 12 13 14 15 16 17 18 19 20 21 22 23 24 25 26 27 28 29 30	NOVEMBER S M T W T F S 1 2 3 4 5 6 7 8 9 10 11 12 13 14 15 16 17 18 19 20 21 22 23 24 25 26 27 28 29 30

Elaine L. Chao is the current United States Secretary of Labor. Previously, Secretary Chao served as president and CEO of United Way of America and Director of the Peace Corps. She also served as the Deputy Secretary of Transportation and Chairman of the Federal Maritime Commission. She was Vice President of BankAmerica and served as a Distinguished Fellow at The Heritage Foundation. She was also selected as a White House Fellow in 1983. Secretary Chao received her M.B.A. from the Harvard Business School and an undergraduate degree in economics from Mount Holyoke College. She is the recipient of 28 honorary doctorate degrees. Secretary Chao has been married for 13 years to Senator Mitch McConnell of Kentucky.



PHOTO COURTESY OF THE DEPARTMENT OF LABOR



“

We have to learn to engage, we have to learn to remain focused, and we never compromise on principle. And, if you keep this in mind, I think you'll have not only successful, but very rewarding and fulfilling careers, as well.

— *Secretary of Labor Elaine L. Chao*

From the Luce Institute's 2006 Conservative Leadership Seminar in Washington, DC.

”

Secretary of Labor Elaine L. Chao speaks to DC-area interns, after receiving the 2006 Conservative Leadership Award at the Luce Institute's 2006 Conservative Leadership Seminar in Washington, DC. Photo courtesy of Twin Lens Photo.

NOVEMBER 2007

GREAT AMERICAN CONSERVATIVE WOMEN



SUNDAY	MONDAY	TUESDAY	WEDNESDAY	THURSDAY	FRIDAY	SATURDAY
OCTOBER S M T W T F S 1 2 3 4 5 6 7 8 9 10 11 12 13 14 15 16 17 18 19 20 21 22 23 24 25 26 27 28 29 30 31	DECEMBER S M T W T F S 1 2 3 4 5 6 7 8 9 10 11 12 13 14 15 16 17 18 19 20 21 22 23 24 25 26 27 28 29 30 31			1	2	3
4 Daylight Savings Time Ends	5	6 Election Day	7	8	9	10 Marine Corps Day
11 Veterans Day	12	13	14	15	16	17
18	19	20 Dedication of Luce Policy Institute's Headquarters in 2003	21	22 Thanksgiving Day	23	24
25	26	27	28	29	30	

Ann Coulter is an attorney specializing in constitutional law. She is a syndicated columnist and a popular campus speaker. She is the author of five New York Times' bestsellers, including *Godless: The Church of Liberalism* (2006), *How to Talk to a Liberal (If You Must): The World According to Ann Coulter* (2004), *Treason: Liberal Treachery from the Cold War to the War on Terror* (2003), *Slander: Liberal Lies About the American Right* (2002), and *High Crimes and Misdemeanors: The Case Against Bill Clinton* (1998). She frequently appears on numerous television and radio programs. She was the recipient of the Luce Institute's 2000 Conservative Leadership Award and the 2004 Woman of the Year Award.



PHOTO BY MATERIAL, INC.



“

All the most prominent liberal spokesmen are people with ‘absolute moral authority’...with a dead husband, a dead child, a wife who works at the CIA, a war record, a terminal illness, or as a last resort, being on a first-name basis with Nelson Mandela. Like Oprah during Sweeps Week, liberals have come to rely exclusively on people with sad stories to improve their Q rating. They’ve become the ‘Lifetime’ TV network of political parties. Liberals prey on people at a time of extreme emotional vulnerability and offer the fame and fortune to be that month’s purveyor of hate. Victory goes to the most hysterical.

— Ann Coulter

From *Godless: The Church of Liberalism*

”

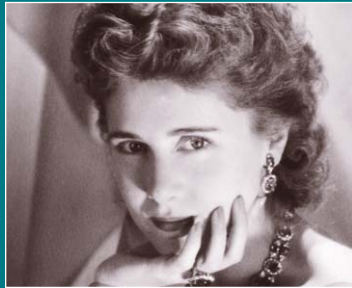
Luce Policy Institute speaker Ann Coulter with students after Luce Institute sponsored speech at Wellesley College in May 2006. Photo Courtesy of Wellesley College Republicans.

DECEMBER 2007

GREAT AMERICAN CONSERVATIVE WOMEN



SUNDAY	MONDAY	TUESDAY	WEDNESDAY	THURSDAY	FRIDAY	SATURDAY
NOVEMBER S M T W T F S 1 2 3 4 5 6 7 8 9 10 11 12 13 14 15 16 17 18 19 20 21 22 23 24 25 26 27 28 29 30	JANUARY 2008 S M T W T F S 1 2 3 4 5 6 7 8 9 10 11 12 13 14 15 16 17 18 19 20 21 22 23 24 25 26 27 28 29 30 31					1
2	3	4	5	6	7	8
			First Day of Hanukkah	Pearl Harbor Day		
9	10	11	12	13	14	15
16	17	18	19	20	21	22
						First Day of Winter
23	24	25	26	27	28	29
30	New Year's Eve 31	Christmas Day				



Clare Boothe Luce
POLICY INSTITUTE

Great American Conservative Women

Clare Boothe Luce Policy Institute
112 Elden Street, Suite P, Herndon, VA 20170
1-888-891-4288 • www.cblpi.org